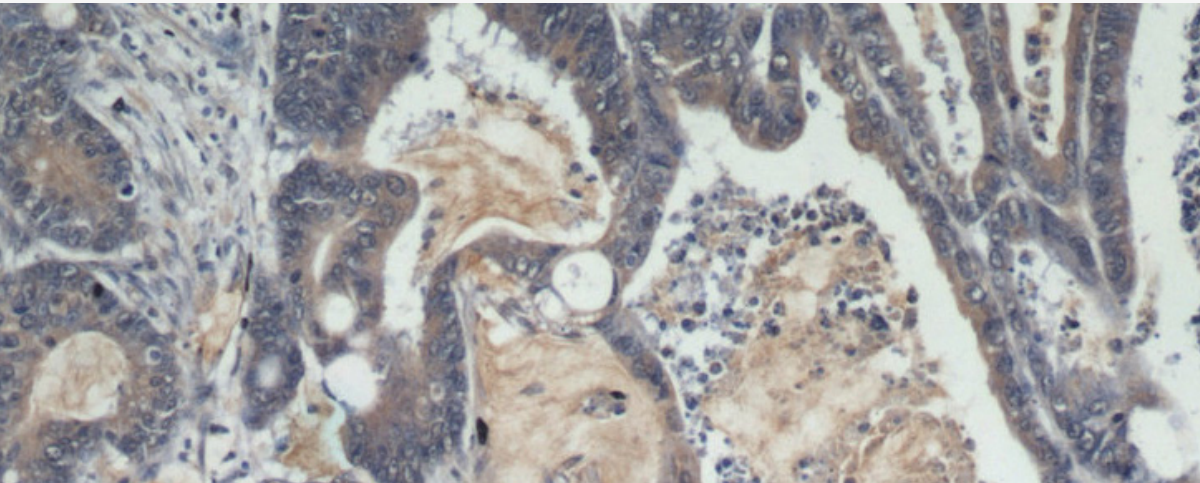


# AUTOPHAGY RESEARCH FOCUS

Autophagy is recognized as the main tool to degrade damaged organelles and misfolded proteins.

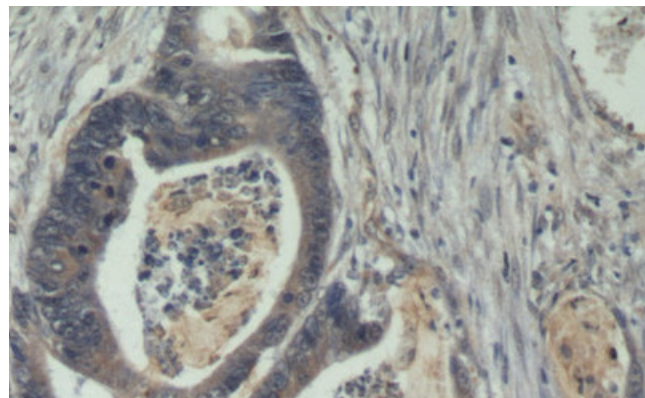


*IHC of paraffin-embedded human colon cancer using Beclin 1 antibody (11306-1-AP) at a dilution of 1:50 (10x objective).*

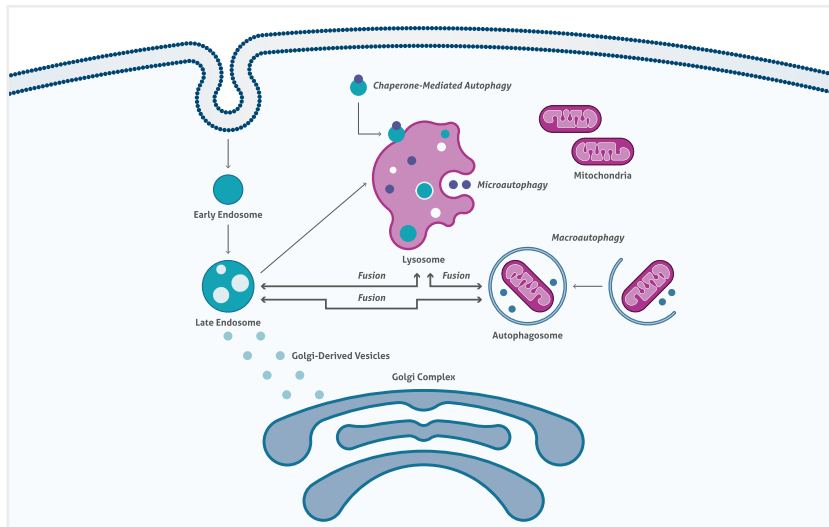


# CONTENTS

- 3 Autophagic Degradation**
- 4 Beclin 1 Antibody**
- 5 LC3 Antibody**
- 6 ATG5 Antibody**
- 7 Related Antibodies**
- 8 \$99 Control Antibodies**
- 9 Contact Us**



# AUTOPHAGIC DEGRADATION



To view the full Autophagy Pathway click [here](https://www.ptglab.com) or visit [ptglab.com](https://www.ptglab.com)

**Figure 1: Macroautophagy, microautophagy, and chaperone-mediated autophagy play main roles in the lysosomal degradation pathways in mammalian cells. Single-ended arrows demonstrate the evolution of structures and double-ended arrows trace fusion processes.**

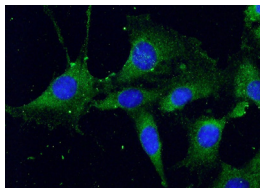
# BECLIN 1 ANTIBODY

A core component of the autophagy machinery

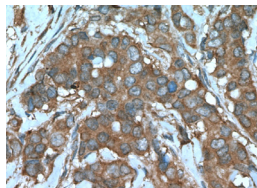
## Product Focus

KD/KO Validated

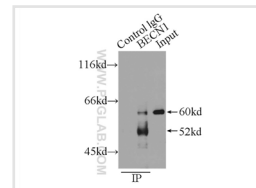
- **Antibody Name**  
Beclin 1
- **Catalog Number**  
11306-1-AP
- **Type**  
Rabbit Polyclonal
- **Publications**  
56 publications
- **Applications**  
ELISA, IF, IHC,  
IP, WB



*Immunofluorescent analysis of NIH/3T3 cells using Beclin 1 antibody (11306-1-AP) at a dilution of 1:50 and Alexa Fluor 488-conjugated AffiniPure Goat Anti-Rabbit IgG(H+L).*



*Immunohistochemistry of paraffin-embedded human breast cancer tissue slide using Beclin 1 antibody (11306-1-AP) at a dilution of 1:200 (40x objective).*



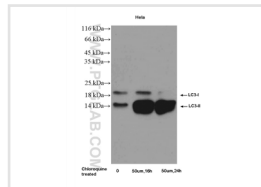
*IP Result of anti-Beclin 1 (IP: 11306-1-AP, 3ug; Detection: 11306-1-AP 1:500) with HeLa cells lysate 1200ug.*

# LC3 ANTIBODY

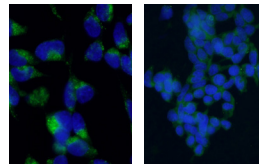
Essential for autophagosome formation.

## Product Focus

- **Antibody Name**  
**LC3**
- **Catalog Number**  
**12135-1-AP**
- **Type**  
Rabbit Polyclonal
- **Publications**  
26 publications
- **Applications**  
ELISA, IF, IHC, WB

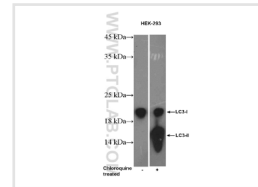


*Chloroquine-treated HeLa cells were subjected to SDS PAGE followed by western blot with LC3 antibody (12135-1-AP) at a dilution of 1:1000.*



Starvation Treated      Untreated

*IF analysis of fixed HEK-293 cells (ethanol at -20 °C) treated with starvation using LC3 antibody (12135-1-AP; 1:50, 40x) and Alexa Fluor 488-conjugated AffiniPure Goat Anti-Rabbit IgG(H+L).*



*Chloroquine-treated HEK-293 cells were subjected to SDS PAGE followed by western blot with LC3 antibody (12135-1-AP) at a dilution of 1:1000.*

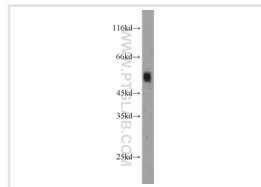
# ATG5 ANTIBODY

A protein containing Ubiquitin folds.

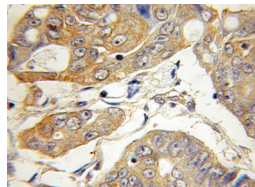
## Product Focus

KD/KO Validated

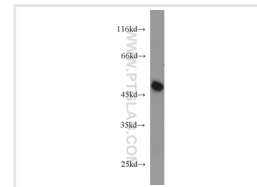
- **Antibody Name**  
**ATG5**
- **Catalog Number**  
**10181-2-AP**
- **Type**  
Rabbit Polyclonal
- **Publications**  
26 publications
- **Applications**  
ELISA, IF, IHC, WB



*Human brain tissue was subjected to SDS PAGE followed by western blot with ATG5 antibody (10181-2-AP) at a dilution of 1:500.*



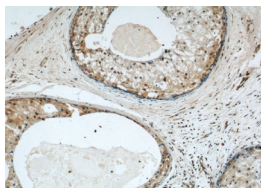
*Immunohistochemistry of paraffin-embedded human colon cancer using ATG5 antibody (10181-2-AP) at a dilution of 1:50 (10x objective).*



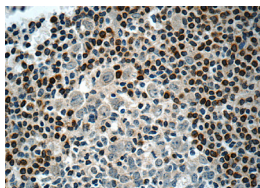
*Mouse kidney tissue was subjected to SDS PAGE followed by western blot with ATG5 antibody (10181-2-AP) at a dilution of 1:1000.*

# RELATED ANTIBODIES

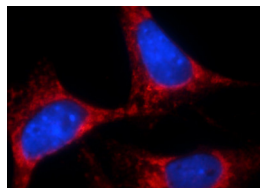
Antibody Name	Catalog Number	Applications	Publications
<a href="#">AEG-1/MTDH-Specific</a>	13860-1-AP	ELISA, IF, IHC, IP, WB	20
<a href="#">BCL2</a>	12789-1-AP	ELISA, FC, IF, IHC, IP, WB	184
<a href="#">Bcl-XL/S</a>	10783-1-AP	ELISA, FC, IF, IHC, IP, WB	49
<a href="#">p62/SQSTM1</a>	18420-1-AP	ELISA, FC, IF, IHC, IP, WB	58



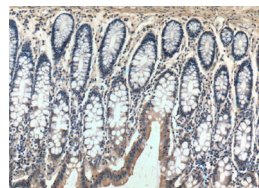
*Immunohistochemistry of paraffin-embedded human breast cancer using AEG-1 antibody (13860-1-AP) at a dilution of 1:50 (10x objective).*



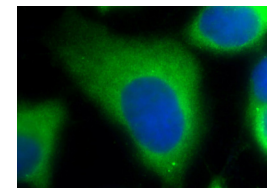
*Immunohistochemistry of paraffin-embedded human tonsillitis tissue slide using BCL2 antibody (12789-1-AP) at a dilution of 1:50 (40x objective).*



*Immunofluorescent analysis of NIH/3T3 cells using Bcl-xL antibody (10783-1-AP) at a dilution of 1:25 and Rhodamine-Goat anti-Rabbit IgG.*



*Immunohistochemistry of paraffin-embedded human colon tissue slide using Bcl-XL antibody (10783-1-AP) at a dilution of 1:200 (10x objective).*



*Immunofluorescent analysis of A431 cells using p62/SQSTM1 (18420-1-AP) antibody at a dilution of 1:50.*

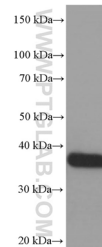
**PROMOTION**

# \$99 CONTROL ANTIBODIES

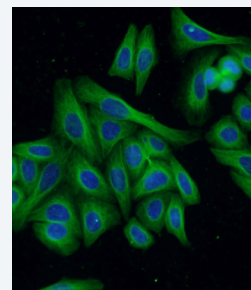
Popular tag/control antibodies are just \$99 each.

GAPDH, beta Tubulin, and 6\*His tag antibodies included.

See the full list of tag/control antibodies at [ptglab.com](https://www.ptglab.com)



*Corn whole-plant tissue was subjected to SDS PAGE followed by western blot with GAPDH antibody (60004-1-Ig) at a dilution of 1:10000.*



*Immunofluorescent analysis of HepG2 cells using beta-Tubulin antibody (66240-1-Ig) at a dilution of 1:50 and Alexa Fluor 488-conjugated AffiniPure Goat Anti-Mouse IgG(H+L).*



# CONTACT US

---

**Proteintech Group**  
*US Head Office*

[proteintech@ptglab.com](mailto:proteintech@ptglab.com)

---

**Proteintech Europe**  
*United Kingdom*

[europe@ptglab.com](mailto:europe@ptglab.com)

---

**Proteintech**  
*China Office*

[service@ptglab.com](mailto:service@ptglab.com)

---

**Support**

Available 24 hours via Live Chat and 9–5 (CDT) via phone.

---

Please visit us at [www.ptglab.com](http://www.ptglab.com) for more information about our antibodies and technical tips.

