

IHCeasy Ready-to-use IHC Kits

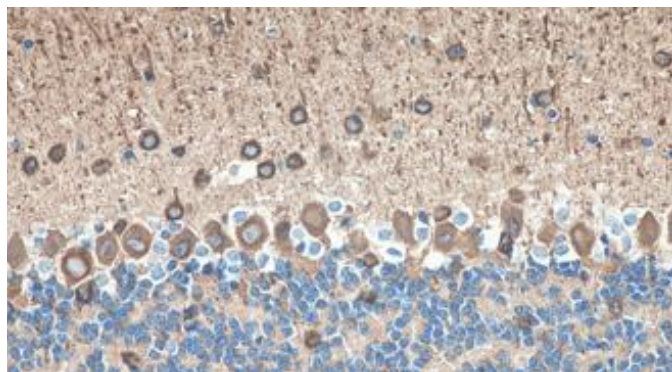


You are steps away from high-quality IHC data

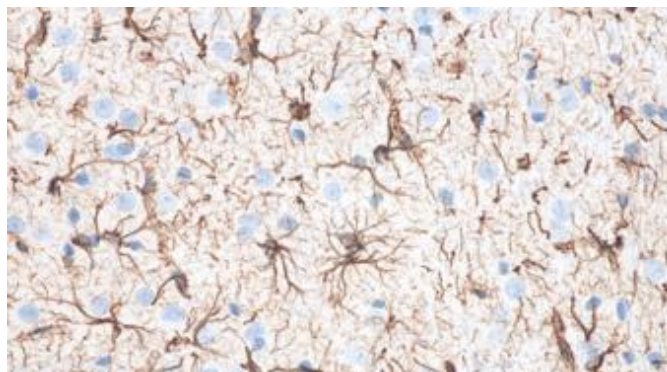
The IHCeasy Ready-to-use IHC Kits are designed to provide all the antibodies and reagents needed to stain your tissue samples, including the primary antibody. Each kit's protocol has been thoroughly optimized to provide the best staining for your protein of interest. The reagents in the kit require minimal preparation – simply apply them directly to your tissue sample and you're steps away from obtaining high-quality IHC data.

What's in the box?

- ✓ Primary Antibody
- ✓ Antigen Retrieval Buffer
- ✓ Blocking Buffer
- ✓ Washing Buffer
- ✓ Secondary Antibody
- ✓ DAB Chromogen
- ✓ Counter Stain
- ✓ Signal Enhancer
- ✓ Mounting Media



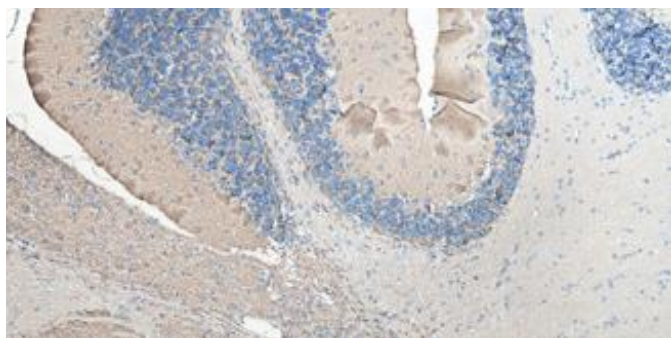
Immunohistochemical analysis of paraffin-embedded mouse cerebellum tissue slide using KHC0042 (TUBB3 IHC Kit).



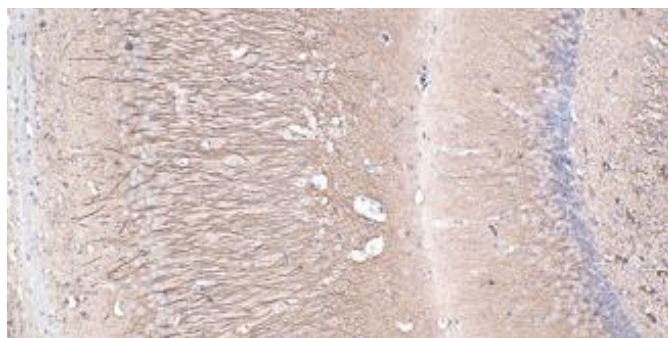
Immunohistochemical analysis of paraffin-embedded rat brain tissue slide using KHC0002 (GFAP IHC Kit).

Cat No.	Protein Target	Primary Antibody Clonality	Species Reactivity
KHC0001	TDP-43	Rabbit Recombinant	Human, rat, mouse
KHC0002	GFAP	Mouse Monoclonal	Human, rat, mouse
KHC0003	NeuN	Mouse Monoclonal	Human, rat, mouse
KHC0042	TUBB3	Mouse Monoclonal	Human, rat, mouse
KHC0043	MAP2	Mouse Monoclonal	Human, rat, mouse
KHC0044	NF-L	Mouse Monoclonal	Human, rat, mouse
KHC0045	NF-M	Mouse Monoclonal	Human, rat, mouse
KHC0046	NF-H/NF200	Mouse Monoclonal	Human, rat, mouse
KHC0047	G3BP1	Mouse Monoclonal	Human, rat, mouse
KHC0048	WFS1	Rabbit Polyclonal	Human, rat, mouse
KHC0049	HuR	Mouse Monoclonal	Human, rat, mouse
KHC0050	S100B	Mouse Monoclonal	Human, rat, mouse
KHC0051	Syntaxin 1A/1B	Mouse Monoclonal	Human, rat, mouse
KHC0052	SOD1	Mouse Monoclonal	Human, rat, mouse
KHC0054	UCHL1	Mouse Monoclonal	Human, rat, mouse
KHC0055	DACH1	Mouse Monoclonal	Human, rat, mouse
KHC0056	IBA1	Rabbit Polyclonal	Human, rat, mouse
KHC0057	FUS/TLS	Rabbit Polyclonal	Human, rat, mouse
KHC0058	P62,SQSTM1	Mouse Monoclonal	Human
KHC0059	Synaptophysin	Mouse Monoclonal	Human, rat, mouse
KHC0084	ALDH1A1	Mouse Monoclonal	Human, rat

Browse the website ptglab.com



Immunohistochemical analysis of paraffin-embedded mouse cerebellum tissue slide using KHC0059 (Synaptophysin IHC Kit).



Immunohistochemical analysis of paraffin-embedded mouse brain tissue slide using KHC0043 (MAP2 IHC Kit).