

# CoraLite

## Fluorescent-dye conjugated antibodies

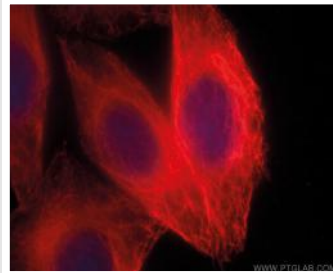
For more information visit [www.ptglab.com](http://www.ptglab.com)

**Antibody Name**  
Alpha Tubulin

**React Species**  
Human, Mouse,  
Rat, Dog

**Catalog Number**  
CL594-66031

**Applications**  
ELISA, IF



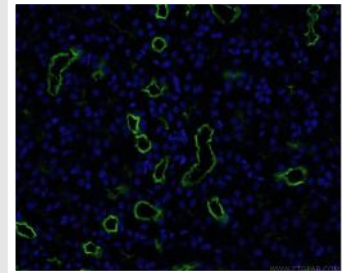
*Immunofluorescent analysis of (-20°C Ethanol) fixed HepG2 cells using CL594-66031 (alpha Tubulin antibody) at dilution of 1:100.*

**Antibody Name**  
CD13

**React Species**  
Human

**Catalog Number**  
CL488-66211

**Applications**  
ELISA, IF



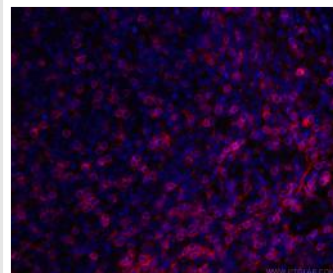
*Immunofluorescent analysis of (4% PFA) fixed mouse kidney tissue using CL488-66211 (CD13 antibody) at dilution of 1:100.*

**Antibody Name**  
CD3

**React Species**  
Human,

**Catalog Number**  
CL594-60181

**Applications**  
ELISA, IF



*Immunofluorescent analysis of (4% PFA) fixed human tonsillitis tissue using CL594-60181 (CD3 antibody) at dilution of 1:100.*

**Antibody Name**  
Cytokeratin 18

**React Species**  
Human

**Catalog Number**  
CL488-66187

**Applications**  
ELISA, IF



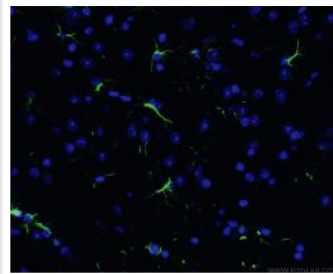
*Immunofluorescent analysis of (-20°C Ethanol) fixed HepG2 cells using CL488-66187 (Cytokeratin 18 antibody) at dilution of 1:100.*

**Antibody Name**  
GFAP

**React Species**  
Human, Mouse,  
Rat, Pig

**Catalog Number**  
CL488-60190

**Applications**  
ELISA, IF



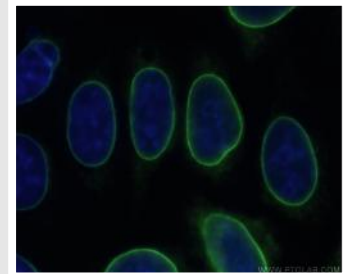
*Immunofluorescent analysis of (4% PFA) fixed mouse brain tissue using CL488-60190 (GFAP antibody) at dilution of 1:100.*

**Antibody Name**  
Lamin B1

**React Species**  
Human, Mouse,  
Rat

**Catalog Number**  
CL488-66095

**Applications**  
ELISA, IF



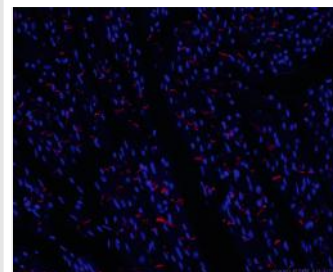
*Immunofluorescent analysis of (-20°C Ethanol) fixed HepG2 cells using CL488-66095 (Lamin B1 antibody) at dilution of 1:100.*

**Antibody Name**  
N-cadherin

**React Species**  
Human, Pig,  
Mouse, Rat

**Catalog Number**  
CL594-66219

**Applications**  
ELISA, IF



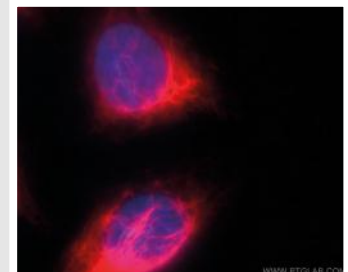
*Immunofluorescent analysis of (4% PFA) fixed mouse heart tissue using CL594-66219 (N-cadherin antibody) at dilution of 1:50 and N/A*

**Antibody Name**  
Vimentin

**React Species**  
human, Mouse,  
Rat

**Catalog Number**  
CL594-60330

**Applications**  
ELISA, IF



*Immunofluorescent analysis of (-20°C Ethanol) fixed HepG2 cells using CL594-60330 (Vimentin antibody) at dilution of 1:100.*

# CoraLite

## Fluorescent-dye conjugated antibodies

Proteintech offers polyclonal and monoclonal primary antibodies in the most popular fluorescent conjugate forms for direct detection, avoiding the need for secondary reagents. Directly conjugated antibodies are precise and reliable tools for a broad range of research applications. Our new CoraLite line of fluorescent conjugated antibodies allows faster and simultaneous detection of multiple targets in one experiment.

Cat. No.	Antigen Name	Species Specificity	Applications
CL594-66200	Acetylated Tubulin(Lys40)	Human, Mouse, Rat, Dog, Pig	IF, ELISA
CL594-66031	Alpha Tubulin	Human, Mouse, Rat, Dog	IF, ELISA
CL488-66379	Beta-Catenin	Human, Mouse, Rat, Pig	IF, ELISA
CL488-66211	CD13	Human	IF, ELISA
CL594-66211	CD13	Human	IF, ELISA
CL488-60271	CD20	Human	IF, ELISA
CL594-66103	CD22	Human	IF, ELISA
CL594-60181	CD3	Human	IF, ELISA
CL488-66065	CD31	Human	IF, ELISA
CL488-66187	Cytokeratin 18	Human	IF, ELISA
CL594-66187	Cytokeratin 18	Human	IF, ELISA
CL488-60190	GFAP	Human, Mouse, Rat, Pig	IF, ELISA
CL594-60190	GFAP	Human, Mouse, Rat, Pig	IF, ELISA
CL594-14157	KRAP/SSFA2	Human, Rat, Mouse	IF, ELISA
CL488-66095	Lamin B1	Human,mouse, Rat	IF, ELISA
CL594-66095	Lamin B1	Human,mouse, Rat	IF, ELISA
CL488-66219	N-cadherin	Human, Pig, Mouse, Rat	IF, ELISA
CL594-66219	N-cadherin	Human, Pig, Mouse, Rat	IF, ELISA
CL488-60330	Vimentin	Human, Mouse, Rat	IF, ELISA
CL594-60330	Vimentin	Human, Mouse, Rat	IF, ELISA