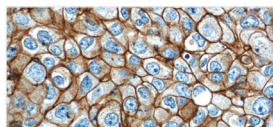


# BREAST CANCER FOCUS

Breast cancer is the leading cause of death in women. It is not the primary breast tumour, but the metastases that are responsible for the high incidences of death. Although medical advances have been able to decrease the mortality rate, more and more women are developing breast cancer each year.<sup>1</sup>

## HER2/ErbB2: Breast cancer diagnosis

HER2/ErbB2 (human epidermal growth factor) is a protein that can affect the growth of several cancer cells, and its overexpression has been reported in numerous cancers, including breast and ovarian tumors. HER2 is a therapeutic target for the treatment of breast cancer.<sup>2,3</sup>



*Immunohistochemical staining of paraffin-embedded human breast cancer using HER2/ErbB2 antibody (51105-1-AP) at a dilution of 1:50 (40x objective).*

## Related Antibodies

Antibody Name	Cat No	Type
HER2/ErbB2	<b>4</b> 18299-1-AP	Rabbit Poly
HER2/ErbB2	51105-1-AP	Mouse Mono

## PAX8: Promoting breast cancer proliferation

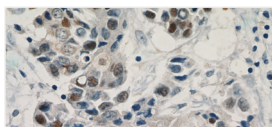
PAX8 is a member of the paired box (PAX) family, and it is involved in oncogenesis. Several recent studies have shown that PAX8 facilitates important regulatory roles in breast cancer cell proliferation and tumor progression.<sup>4,5</sup>

## Related Antibodies

Antibody Name	Cat No	Type
PAX8	<b>172</b> 10336-1-AP	Rabbit Poly
PAX8	60145-4-Ig	Mouse Mono
PAX8-Specific	66073-1-Ig	Mouse Mono
Pan-PAX	<b>1</b> 21383-1-AP	Rabbit Poly

## ESR/ER

The estrogen receptor (ESR/ER) is a ligand-activated transcription factor composed of several domains important for hormone binding, DNA binding, and activation of transcription. Expression and mutation of ESR/ER are common features in breast cancer.<sup>6,7</sup>



*Immunohistochemical staining of paraffin-embedded human breast cancer using ER antibody (21244-1-AP) at a dilution of 1:25 (40x objective). Heat-mediated antigen retrieval with Citric acid buffer, pH6.0.*

## Related Antibodies

Antibody Name	Cat No	Type
ESR/ER	<b>6</b> 21244-1-AP	Rabbit Poly

## More Breast Cancer-related Antibodies From Proteintech

Antibody Name	Cat No	Type
ADAM12	<b>12</b> 14139-1-AP	Rabbit Poly
COL1A2	<b>17</b> 14695-1-AP	Rabbit Poly
FKBPL	<b>10</b> 10060-1-AP	Rabbit Poly
MMP-1	<b>9</b> 10371-2-AP	Rabbit Poly
PALLD	<b>36</b> 10853-1-AP	Rabbit Poly
PR	25871-1-AP	Rabbit Poly
PR	66300-1-Ig	Mouse Mono

**00** This number shows the amount of times our antibody has been cited in a publication.

## References

- Eifel P, et al. J. Natl Cancer Inst, 2001; 93: 979–989.
- Flavia F, et al. BMC Cancer, 2013; 19: 13: 81.
- Lu Y, et al. Oncotarget, 2016; Mar 16.
- Zhong X, et al. BMP Rep, 2011; 44: 595–600.
- Xia X, et al. Onc Letters, 2015; 29: 1501–06.
- Nadji M, et al. Am J Clin Path, 2005; 123: 21–7.
- Rhodes A, et al. J Clin Pathol, 2000; 53: 688–96.