

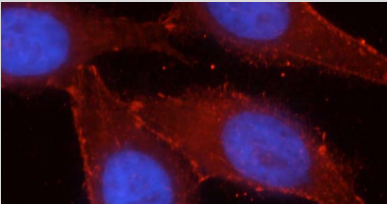
ANTIBODIES FOR HYPOXIA RESEARCH

Notable Proteintech[®] antibodies for hypoxia research.

Please Note: All products featured in this product focus are for research use only.

Antibody Name	Cat. No.	Type	Applications
ARNT, HIF1B	4 14105-1-AP	Rabbit Poly	ELISA, IF, IP, WB
BACH1	K 2 14018-1-AP	Rabbit Poly	ELISA, IHC, WB

Antibody Name
beta-Catenin
Catalog Number
51067-2-AP
Type
Rabbit Polyclonal
Applications
ELISA, IF, IHC, IP, WB

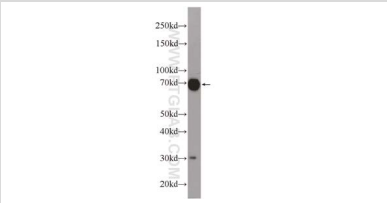


63 Publications

KD/KO Validated

Immunofluorescent analysis of HepG2 cells, using CTNNB1 antibody (51067-2-AP) at a 1:50 dilution and Rhodamine-labeled goat anti-rabbit IgG (red).

Antibody Name
CA IX
Catalog Number
11071-1-AP
Type
Rabbit Polyclonal
Applications
ELISA, FC, IHC, IP, WB



4 Publications

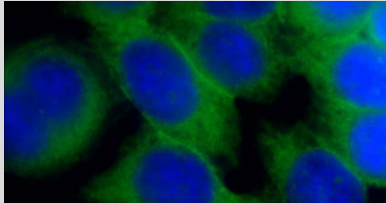
Mouse skin tissue was subjected to SDS PAGE followed by western blot with CA9 antibody (11071-1-AP) at a dilution of 1:1000.

CA IX	11443-1-AP	Rabbit Poly	ELISA, IHC, WB
CA9	66243-1-Ig	Mouse Mono	ELISA, IF, IHC, WB
Clusterin	66109-1-Ig	Mouse Mono	ELISA, IHC, WB
Clusterin	2 12289-1-AP	Rabbit Poly	ELISA, IHC, IP, WB
Creatine kinase B type	15137-1-AP	Rabbit Poly	ELISA, IHC, IP, WB
Creatine kinase B-Specific	18713-1-AP	Rabbit Poly	ELISA, IHC, WB
CREB1	4 12208-1-AP	Rabbit Poly	ELISA, FC, IF, IHC, IP, WB
CUL2	K 3 10981-2-AP	Rabbit Poly	ELISA, IF, IHC, IP, WB

00 This number shows the amount of times our antibody has been cited in a publication.

Antibody Name	Cat. No.	Type	Applications
CXCR4	5 60042-1-Ig	Mouse Mono	ELISA, FC, WB
CXCR4	3 11073-2-AP	Rabbit Poly	ELISA, IP, WB
EEF1B2	60329-1-Ig	Mouse Mono	ELISA, IF, WB
EEF1B2	K 3 10095-2-AP	Rabbit Poly	ELISA, IF, IHC, IP, WB
EEF1B2	5 10483-1-AP	Rabbit Poly	ELISA, IHC, WB
EGFR (C-terminal)	51071-2-AP	Rabbit Poly	ELISA, IF, IHC, IP, WB
EGFR (N-terminal)	2 22542-1-AP	Rabbit Poly	ELISA, FC, IHC, WB
EGFR-Specific	17 18986-1-AP	Rabbit Poly	ELISA, FC, IF, IHC, IP, WB
EPO	17908-1-AP	Rabbit Poly	ELISA, IHC, WB
GLUT1	66290-1-Ig	Mouse Mono	ELISA, FC, IHC, WB

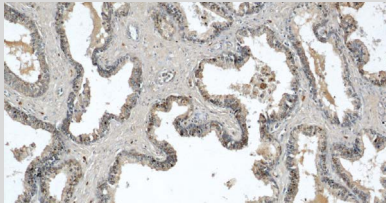
Antibody Name
GLUT1
Catalog Number
21829-1-AP
Type
Rabbit Polyclonal
Applications
ELISA, FC, IF, IHC, WB



19 Publications

Immunofluorescent analysis of HeLa cells using SLC2A1, GLUT1 antibody (21829-1-AP) at a dilution of 1:50 and Alexa Fluor 488-conjugated AffiniPure Goat Anti-Rabbit IgG(H+L).

Antibody Name
GSK3B
Catalog Number
22104-1-AP
Type
Rabbit Polyclonal
Applications
ELISA, IF, IHC, IP, WB



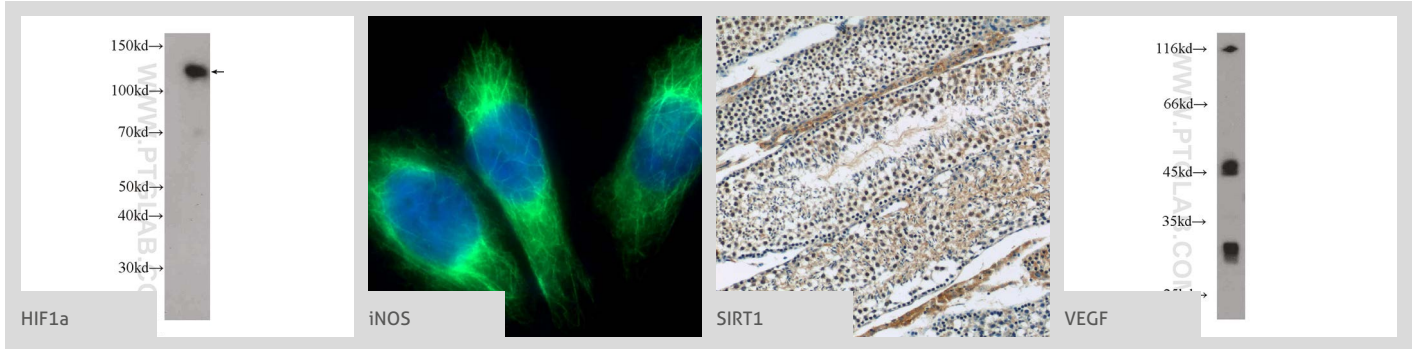
34 Publications

KD/KO Validated

Immunohistochemical staining of paraffin-embedded human prostate hyperplasia using GSK3B antibody (22104-1-AP) at a dilution of 1:50 (10x objective).

K This icon shows that the antibody has been validated using siRNA knockdown/knockout experiment.

More validation images available on our website.



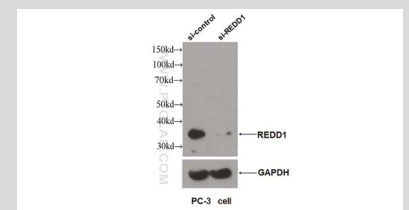
Antibody Name	Cat. No.	Type	Applications
GSK3B	1 51065-1-AP	Rabbit Poly	ELISA, IF, IHC, IP, WB
GSK3B	2 15113-1-AP	Rabbit Poly	ELISA, IHC, IP, WB
GSK3B	24198-1-AP	Rabbit Poly	ELISA, FC, IF, IHC, IP, WB
HIF1a	K 44 20960-1-AP	Rabbit Poly	ELISA, FC, IF, IHC, WB
HIF1AN	10646-1-AP	Rabbit Poly	ELISA, IHC, WB
HMOX2	2 14817-1-AP	Rabbit Poly	ELISA, IF, IHC, IP, WB
HSP90	1 60318-1-Ig	Mouse Mono	ELISA, FC, WB
HSP90	16 13171-1-AP	Rabbit Poly	ELISA, FC, IF, IHC, IP, WB
iNOS	13 18985-1-AP	Rabbit Poly	ELISA, IF, IHC, WB
L-VEGFA	1 22341-1-AP	Rabbit Poly	ELISA, IF, WB
NSE	55235-1-AP	Rabbit Poly	ELISA, IHC, WB
NSE	66150-1-Ig	Mouse Mono	ELISA, IF, IHC, WB
NSE	10149-1-AP	Rabbit Poly	ELISA, IHC, IP, WB
PHD1	1 12984-1-AP	Rabbit Poly	ELISA, IF, WB
PHD2	19886-1-AP	Rabbit Poly	ELISA, WB
PHD2	20368-1-AP	Rabbit Poly	ELISA, IF, IHC, WB
PHD3	2 18325-1-AP	Rabbit Poly	ELISA, IHC, IP, WB
RBX1	1 14895-1-AP	Rabbit Poly	ELISA, IHC, IP, WB

00 This number shows the amount of times our antibody has been cited in a publication.

Antibody Name
REDD1 Specific
Catalog Number
10638-1-AP
Type
Rabbit Polyclonal
Applications
ELISA, IF, IHC, IP, WB

134 Publications

KD/KO Validated



WB result of REDD1 antibody (10638-1-AP, 1:1000) with si-control and si-REDD1 transfected PC-3 cells.

SIAH1	13886-1-AP	Rabbit Poly	ELISA, WB
SIAH2	12651-1-AP	Rabbit Poly	ELISA, IP, WB
SIRT1	K 60303-1-Ig	Mouse Mono	ELISA, IF, IHC, IP, WB
SIRT1	K 29 13161-1-AP	Rabbit Poly	ELISA, IF, IHC, IP, WB
TCEB1	2 12450-1-AP	Rabbit Poly	ELISA, IHC, WB
TCEB2	1 10779-1-AP	Rabbit Poly	ELISA, IHC, IP, WB
UBE2D1-Specific	K 11373-1-AP	Rabbit Poly	ELISA, IHC, WB
UBE2D3	3 11677-1-AP	Rabbit Poly	ELISA, IHC, WB
VEGF	K 70 19003-1-AP	Rabbit Poly	ELISA, IF, IHC, IP, WB
VHL	24756-1-AP	Rabbit Poly	ELISA, IF
VHL	1 16538-1-AP	Rabbit Poly	ELISA, IF, IHC

K This icon shows that the antibody has been validated using siRNA knockdown/knockout experiment.



FROM OUR BENCH TO YOUR BENCH™

